

CCA-101- Fundamentals of IT & programming

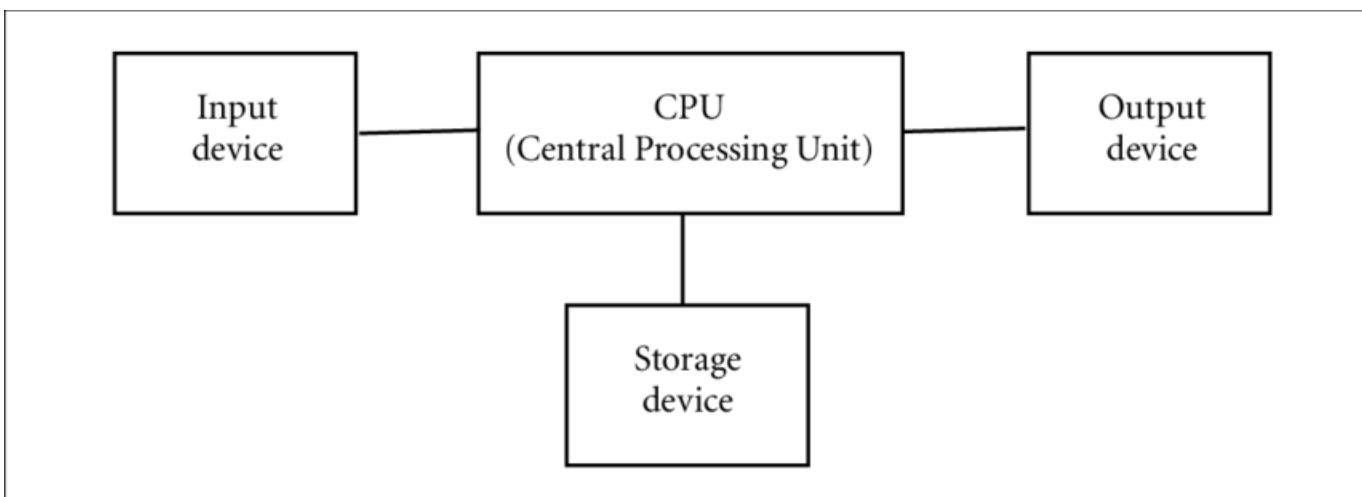
Assignment-1

Ans 1: The four fundamental components of a computer system are: (i)**Input** – Devices are used to give information to computer
(ii) **Output** –An output device is any hardware device used to send data from a computer to another device or user.

Advertisements.

(iii)**Central Processing Unit** –CPU is short for Central Processing Unit. It is also known as a processor or microprocessor. It's one of the most important pieces of hardware

(iv)**Memory Unit** -The memory unit is a component of a computer system. It is used to store data, instructions and information. It is also known as a principal/primary/internal



Ans 2 :

Computer types based on size :-

<i>**Supercomputer** - Supercomputer of Computer with a High level of Performance as Computer to a General-Purpose Computer.

<ii>**Mainframe computer** - mainframes are data servers designed to process up to 1 trillion web transactions daily with the levels of security and reliability.

<iii>**Mini computer** – Computer that was smaller, less expensive and less powerful than a , mainframe or supercomputer but more expensive and more powerful than personal computer.

<iv>**Micro computer** –A micro computer is a complete computer on a small scale, designed for use by one person at a time .

Based of capacity:-

<i> **Digital Computer** –Digital Computer, any of a class of a class of devices capable of Solving Problems by Processing Information in discrete Form. It operates on data, including magnitudes, letter, and symbols, that are expressed I binary cade. Using Only the two Digits 0 and 1.

<ii> **Hybrid computer** – it is a computer that exhibit features of analog computer and digital computer .the physical machinery that defines whether a computer unit is hybrid or not .

<iii> **Analog computer** – A computer that works with numbers represented by directly measurable quantities (as voltages or resistances) compare digital computer .

Ans 3: Generation in computer terminology is a change in technology a computer is /was being used

There are five computer generations are defined:-

Generation of computer	Evolving Hardware
First Generation	Vacuum tube based
Second Generation	Transistor
Third Generation	Integrated circuit based
Fourth Generation	Microprocessor based
Fifth Generation	Artificial intelligence based

Ans 4: Volatile memories- it is a temporary memory because it can only hold the information until the device or the computer runs on power it loess the stored memory as soon as someone interrupts the power supply.

Non-volatile memories: Volatile storage is a type of computer memory that can retain stored information even after power is removed. In contrast, volatile memory needs constant power in order to retain data.

Ans 5: system software: it is a program that is architected to execute process hardware and application software development simultaneously.

Application software: the sole purpose of application software is to aid the user in doing specified tasks. Web browsers like Firefox, Google Chrome and Excel.

Open source software: The term open source refers to something people can modify and share because its design is publicly accessible.

Ans 6: I am **ABHISHEK BUDAKOTI BELONGS TO VILLAGE FARSULA** in Pauri Garhwal district of Uttarakhand. And I am completed my senior secondary school of UK board. I am also learning computer CDA(The Career Development Academy). My hobbies are to play or cricket.
"Need to get IMS's, Address".

Ans7: MS Word

MS Word is a widely used commercial word processor developed by Microsoft.

MS word is application software, which is capable of

- **Creating,**
- **Editing**
- **Saving, and**
- **Printing any type of document**

Ans 8: Equations

$$X_2 + Y^5 = 30$$

$$Z_3 + Q^4 = 50$$

$$A_2 + B^8 = X_2 + Y^8$$

Ans 9:

Select the text you want to convert.

Select the insert tab.

Click on **Table** command. A dialog box appears.

Click on **Convert Text to Table**, a new dialog box appears here set number of columns.

Click on OK Finally Selected text in a table.

Select the text you want to convert.	Select the Insert tab.
Click on Table command. A dialog box appears.	Click on Convert Text to Table, a new dialog box appears
here set number of columns.	Click on OK Finally Selected text in a table.

Ans 10: How to insert a table:-

Step1: click on the insert tab at the ribbon.

Step2: click table option in insert group.

Step3: Now click create table, next will open a dialog box.

Step4: Enter number of rows and column as per your need

Step5: Now click ok button, table will be inserted in your word document.

Ans11:-

	A	B	C
1	Roll No	Name	Marks
2	1	n1	60
3	2	n2	70
4	3	n3	80
5	4	n4	90
6	5	n5	40
7	6	n6	50
8	7	n7	77
9	8	n8	44
10	9	n9	88
11	10	n10	55

Ans:12-

	A	B	C	D
1	Roll No	Name	Marks	
2	1	n1	60	
3	2	n2	70	
4	3	n3	80	
5	4	n4	90	
6	5	n5	40	
7	6	n6	50	
8	7	n7	77	
9	8	n8	44	
10	9	n9	88	
11	10	n10	55	
12		Sum	654	
13		Average	65.4	
14		Higest	90	
15		Lowest	40	
16				
17				

Ans13: (A)

➤ Modify column width –

Home Menu – Format – Column width (or drag the column)

➤ Modify row height –

Home Menu- Format –row height (or drag the column)

➤ Delete row and columns–

Home Menu –Delete – Delete row and columns

(B)

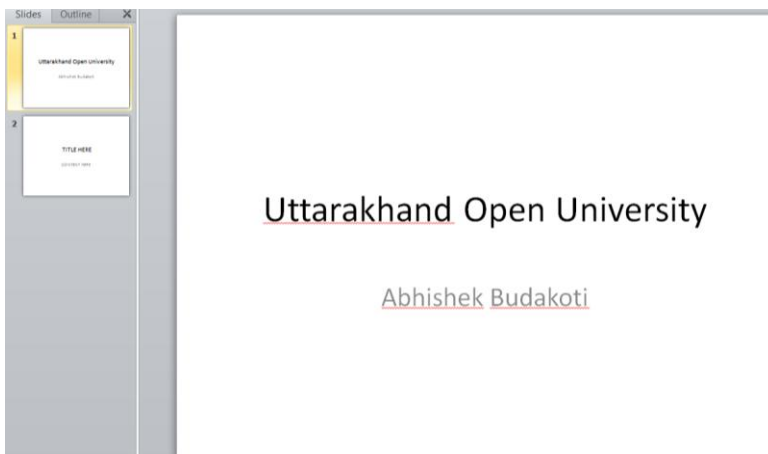
➤ Absolute reference –These cell reference are preceded by a dollar sign.

- Relative reference-relative reference when copied across multiple cell, they change based on the relative position of rows and columns
- Cell Address- it is a combination of a column letter and a row number that identifies a cell on a Worksheet.

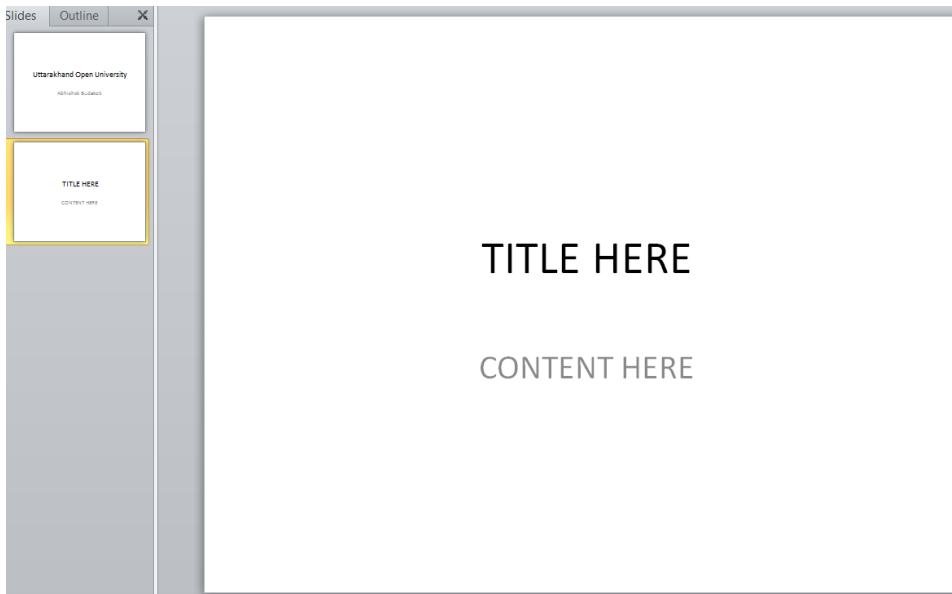
Ans14: (A) To customize our power point presentation followed –

- Color Themes
- Templates & Themes
- Audio & video
- Animation
- Radials
- Shapes
- Maps
- Table

(b) Collage and Name

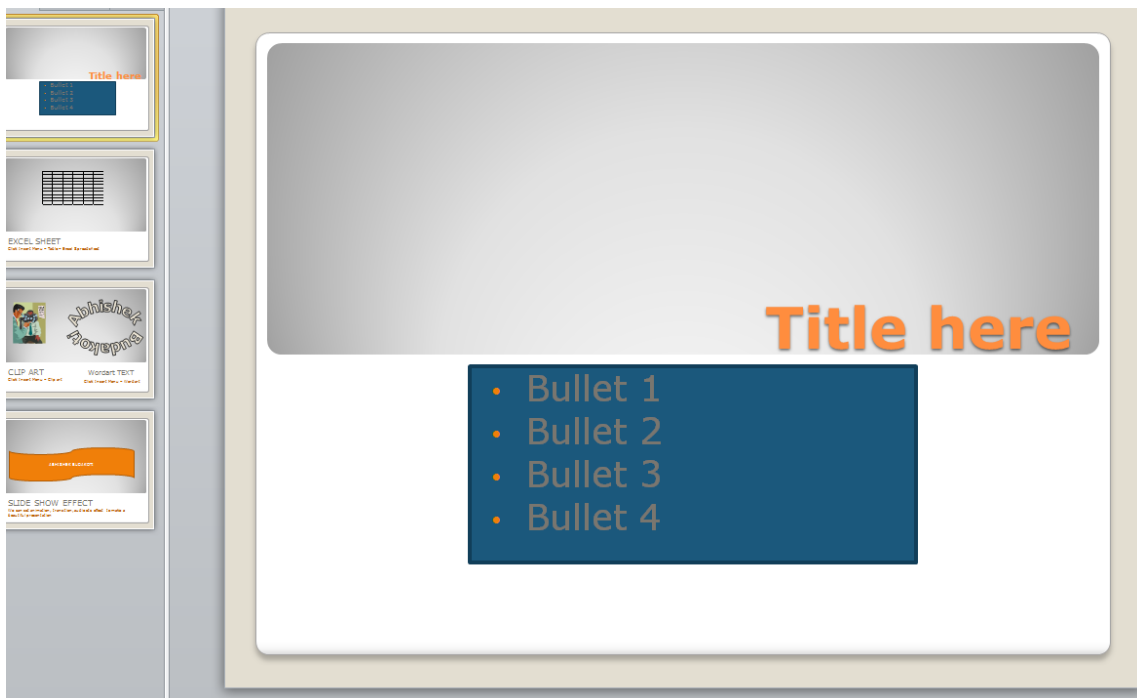


Ans 15 –Title and Subtitle Slide

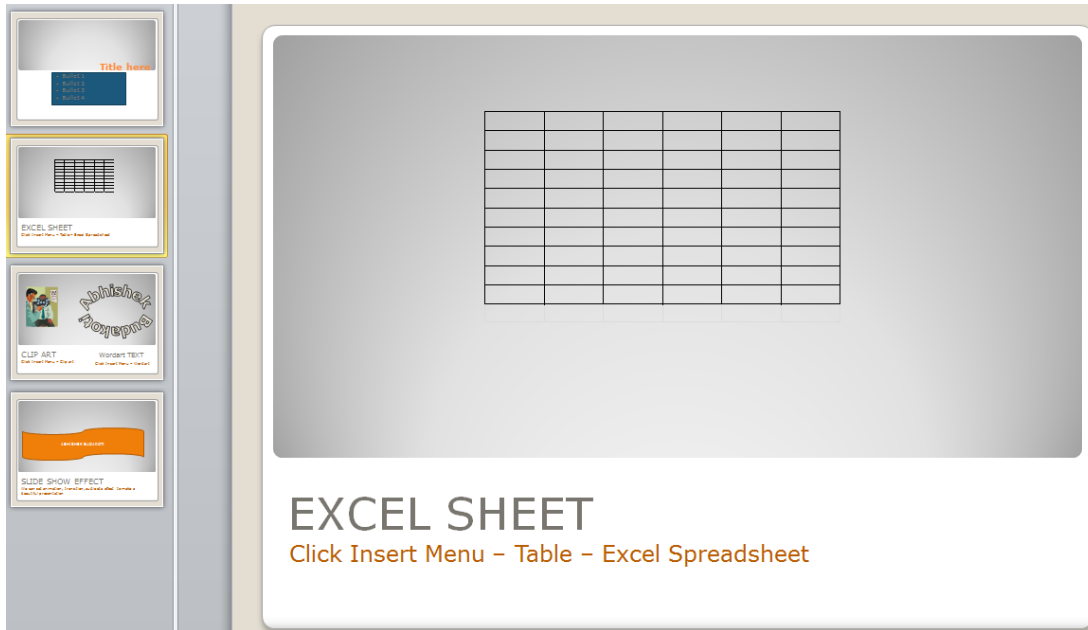


Ans 15 –

➤ Title slide & bullet list



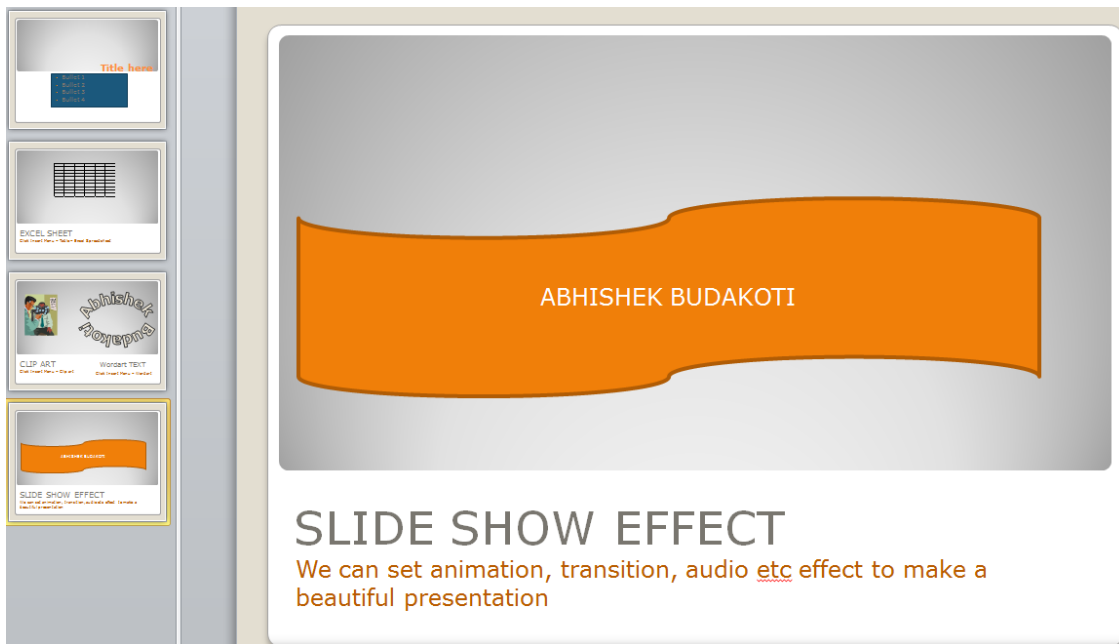
➤ Inserting Excel sheet



➤ Clip art and text



➤ Slide show effects



Part- 2

Ans:16-

Machine language- A language used for computer programs in which Instructions are written in the Form of numbers so that a computer can understand and act on them.

High level language- High level language also offer the programmer development tools such as libraries and built-in functions.

Ans:17- The four basic data types in C-programing .

- Int (Integer)
- Float (floating point number)
- Char (character)
- Double (double precision floating point).